

Bus Routes and How to
Ride the Bus

Lake Tazawa 田沢湖 Kakunodate Bus Route Map

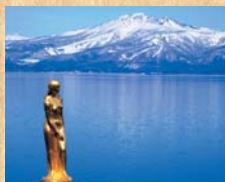
Why not take a bus to visit
some hidden scenic spots?

※ See the page inside for details on how to ride the bus.



Gozanoishi Shrine
御座の石神社

This shrine is dedicated to Princess Tatsuko. Here you can see the Tree of Seven Colors, which has seven different kinds of trees taking root in a single tree.



Lake Tazawa
田沢湖

A nearly circular lake about 20 kilometers in circumference. It boasts a depth of 423.4 meters, the deepest in Japan.

Gozanoishi Jinja-mae
御座の石神社前

Lake Tazawa

Katajiri
湯尻

Statue of
Tatsuko

Tazawa Kohan
田沢湖畔



Boat Tour 遊覧船

Enjoy a trip on a boat around Lake Tazawa. The trip is about 40 minutes and the view from the large windows is magnificent.

Before Tazawako Station
田沢湖駅前

Before Sashimaki Station
刺巻駅前

Before Jindai Station
神代駅前角

Before Kakunodate Station
角館駅前

Kakunodate Eigyosho
角館営業所



Samurai Residence Street 武家屋敷通り

Six samurai residences have been restored and opened to the public. In spring, the street is lined with the blossoms of weeping cherry trees. The new green foliage of summer, the red autumnal leaves, and the winter snowscape are also beautiful sights to see.

Fukenoyu Onsen
蒸の湯温泉

Goshogake Onsen
後生掛温泉

Tamagawa Onsen
玉川温泉

Shin-Tamagawa Onsen
新玉川温泉

Yoroihata
鎧畑

Ishigami-bashi
石神橋

Tazawako Kogen Onsen
田沢湖高原温泉

Kami-Kogen Onsen
上高原温泉

Nyuto Onsen
乳頭温泉

Arupa Komakusa
アルパこまくさ

Komagadake Hachi-gome
駒ヶ岳八合目

Tazawako Ski Resort
たざわ湖スキー場

Famous for its wide ski runs that spread across the western slopes of Mt. Komagadake, as well as its powdery snow.

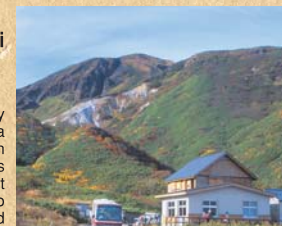
The 8th Station of Mt. Komagadake 駒ヶ岳八合目
This boasts the highest elevation in Akita Prefecture, with a wonderful view and hundreds of species of alpine plants, which are said to be the most magnificent in northern Japan.

- Tazawako Isshu Route
- Nyuto Route
- Komagatake Route
- Yoroihata Route
- Hachimantai Route
- Shin-Tamagawa Route
- Obonai Route

Hachimantai Chojo
八幡平頂上

Towada-Hachimantai National Park
十和田八幡平公園

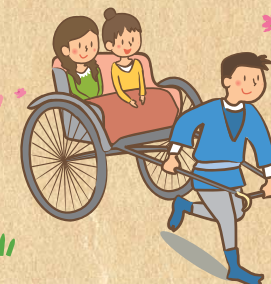
A national park shared by Aomori, Iwate and Akita prefectures. Blessed with many hot spring resorts such as Tamagawa Hot Springs, this area is also famous for its spring and autumn foliage.



Shirahama Beach
白浜
A lakefront with a white sand beach including quartz. Visitors can enjoy lake bathing and water sports here.



Nyuto Hot Springs 乳頭温泉
The seven hot springs located at the foot of Mt. Nyuto are collectively known as Nyuto Hot Spring Village. Each hot spring has its own distinctive appeal.



How to Ride the Bus

Please board and exit the bus at the front.
Please pay the fare when exiting.

Rollsign

This indicates the destination.

Microphone

This allows communications while the front door is open.

Entrance·Exit

External speaker

Traveling direction



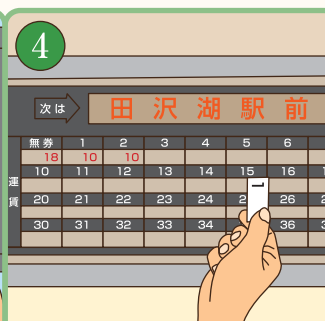
1 Board the bus through the front door.



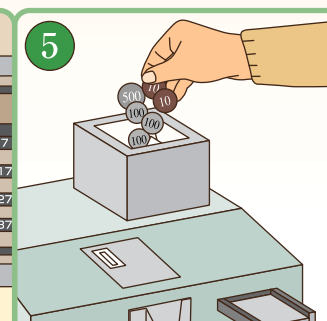
2 Take a numbered ticket at the entrance. Keep the ticket with you as you will need it when exiting.



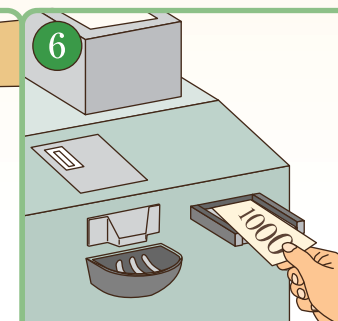
3 Press this button when your destination is announced.



4 Look at the fare sign located at the front of the bus, find your ticket number, and pay the fare that is listed under your ticket number.



5 Exit the bus through the front door. Deposit your fare and ticket in the fare box next to the driver's seat as you leave.



6 The fare box does not give change, so please change bills into coins using the change machine attached to the box, if necessary.